

CHISHOLM TRAIL
ANGUS
ASSOCIATION

65th
Annual Sale

83 Bulls Sell
26 Commercial Pairs

March 18, 2016
1:00 p.m.
Winfield Livestock
Auction
Winfield, Kansas

Join Us for a
Complimentary Lunch
Provided by:

Schmidt & Sons, Inc.

Winfield and Mount Hope, Kan.
(620) 221-0300 or (316) 445-2103

Mills Feed & Supply

Moline, Kan.
(620) 647-3294

PrairieLand Partners, Inc.

John Deere Sales & Service
Anthony, Wichita and Winfield
(620) 842-5137, (316) 943-4261, (620)
221-0000

Lena Hommertzheim

ABS Global
(316) 734-5473

Two Rivers Co-op

Arkansas City, Kan.
(620) 442-7990

D&S Auto Supply

Winfield, Kan.
(620) 221-3110

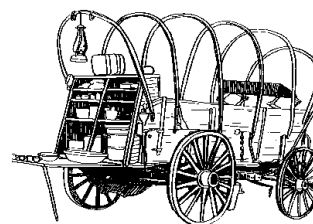
Valley Co-op

Winfield, Kan.
(800) 221-4346

Winfield Veterinary Hospital

Winfield, Kan.
(620) 221-9505

Thank You to
our Meal Sponsors





65th Annual Chisholm Trail Angus Association Sale

Friday, March 18, 2016
1:00 p.m.

Winfield Livestock Auction - Winfield, Kansas
1 1/2 Miles West of Winfield on Hwy. 160

Selling

83 Registered Angus Bulls
26 Commercial Angus Pairs

Auctioneer

John Brazle, Winfield, Kansas, (620) 221-4364

Sale Manager

Bill McIntire
1399 NE 130th Avenue
Argonia, KS 67004
(620) 435-6646

Special Guests

Bill McIntire, President, Chisholm Trail Angus Association
Susan Grelinger, Secretary, Chisholm Trail Angus Association
Stuart Rose, President, Kansas Angus Association
Anne Lampe, Secretary, Kansas Angus Association

Terms & Conditions

Cattle will sell under the standard terms and conditions as recommended by the American Angus Association.
All bulls sell semen tested.
All non-virgin bulls have tested negative for trichomoniasis.
All bulls are free of known genetic defects.

Food & Refreshments

Rolls and coffee will be provided. Complimentary cowboy lunch is served beginning at 11:30 a.m.

Lot Numbers

The tags on animals will correspond with lot number in the catalog.

Sale Day Phone

(620) 221-4364

For more information, contact:
Bill McIntire, (620) 435-6646

Chisholm Trail Angus Association

1 Meadowmeres Bismarck B34

Calved: 1/21/14 Tattoo: B34 17939894

#+S A V Bismarck 5682
S A V Abigale 0451

#G D A R Grid Maker
G A R Precision 2536
#Schoenes Fix It 826
S A V Abigale 6062

#Genetics by Design 049
Meadowmeres Eileen W69 A162
Meadowmeres Eileen ELD W69

#B/R New Design 036
G G Clara 859
#Rito 616 of 4B20 6807
Meadowmeres Eileen ELD T137

BW	WW	Milk	YW	Act.BW	Adj.WW	Adj.YW
I-1.1	I+46	+21	I+80	69	655	1026

Weaning (\$W)	Feedlot (\$F)	Calving Ease	Beef (\$B)
+47.14	+30.2	+13	

Owned By: Meadowmere Angus, Westmoreland, Kan.

A light birth weigh bull. Calving ease and performance is stacked on both sides of his pedigree. Negative for BVD-PI.

2 Meadowmeres Absolute B54

Calved: 1/22/14 Tattoo: B54 17939887

K C F Bennett Absolute
Thomas Miss Lucy 5152

#S A V Final Answer 0035
#Sitz Traveler 8180
S A V Emulous 8145
#+Wulffs Ext 6106
Thomas Miss Lucy 3050

Meadowmeres Erica X250
Meadowmeres Erica EL301D

#Three Trees Prime Cut 0145
#Summitcrest Prime Cut 1G42
#Black Tooth Lady B 380
#Plowman 1627 of Millbrae SAR
Meadowmeres Erica 4636

BW	WW	Milk	YW	Act.BW	Adj.WW	Adj.YW
I-2.2	I+48	+11	I+93	68	563	1008

Weaning (\$W)	Feedlot (\$F)	Calving Ease	Beef (\$B)
+34.34	+52.12	+14	+112.5

Owned By: Meadowmere Angus, Westmoreland, Kan.

Light birth weight and by one of the most popular Angus bulls in both commercial and registered herds. Absolute is known for calving ease and growth and is in the top 10-percent of the bulls tested in the Angus Alliance program for total efficiency. Negative for BVD-PI.

3 TM Gridiron 4322

Calved: 1/29/14 Tattoo: 4322 17989041

#TC Gridiron 258
#TC Blackbird 7049

#G D A R Grid Maker
G A R Precision 2536
#T C Dividend 494
O C C Blackbird 902D

TM MRS Queen 9007
T&M MRS Queen 7023

#Morgans Direction 111 9901
#C A Future Direction 5321
MCC Barbie 9901 5205 797
#Nichols Extra H6
T&M MRS RANCHER1061

BW	WW	Milk	YW	Act.BW	Adj.WW	Adj.YW
I+2.3	I+51	I+17	I+93			1160

Weaning (\$W)	Feedlot (\$F)	Calving Ease	Beef (\$B)
+29.44	+44.83	+4	

Owned By: T&M Angus Ranch, LLC, Argonia, Kan.

A moderate birth weight son of TC Gridiron with a +92 yearling weight. Will add pounds to your calf crop. Adj YW 1160. Semen tested, no creep. Negative for BVD-PI3.

4 Meadowmeres Added Value B94

Calved: 02/02/14 Tattoo: B94 17939893

#Sinclair Added Value 5PV44
+N Bar Enchantress U131G

#+Sinclair Net Present Value
#N Bar Prime Time D806
+Ideal 4465 of 6807 4286
N Bar Honcho U2024
N Bar Enchantress 4906

Meadowmeres Eileen U78 A32
Meadowmeres Eileen U78

Yon Future Focus T219
#Mytty In Focus
YON Hazel R133
#4 Point 8 of Ironwood
MeadowEileen of Omnia L21N63

BW	WW	Milk	YW	Act.BW	Adj.WW	Adj.YW
I+1.4	I+53	I+15	I+87	80	700	1050

Weaning (\$W)	Feedlot (\$F)	Calving Ease	Beef (\$B)
+43.59	+37.78	+5	

Owned By: Meadowmere Angus, Westmoreland, Kan.

The first calf of a really nice cow with a beautiful udder. A very nice 205-day weaning weight. Added Value is a calving ease sire that excels for maternal efficiency and value in the feedlot. Negative for BVD-PI.

5 TM Absolute 4336

Calved: 2/07/14 Tattoo: 4336 17991398

K C F Bennett Absolute
Thomas Miss Lucy 5152

#S A V Final Answer 0035
#Sitz Traveler 8180
S A V Emulous 8145
#+Wulffs Ext 6106
Thomas Miss Lucy 3050

TM MRS Princess 2315
#TM Mrs Princess 6034

#Hoover Dam
#SydGen C C & 7
#Erica of Ellston C124
T&MNEW Design 0364047
#T&M MRS Alberda T3047

BW	WW	Milk	YW	Act.BW	Adj.WW	Adj.YW
-0.9	I+57	I+25	I+99			1193

Weaning (\$W)	Feedlot (\$F)	Calving Ease	Beef (\$B)
+45.91	+50.73	+12	

Owned By: T&M Angus Ranch, LLC, Argonia, Kan.

A low birth weight son of Absolute with a pedigree stacked with performance and carcass. Look at -0.9 BW with a +102 YW EPD. Good on heifers or cows. Adj YW 1193. Semen tested, no creep. Negative for BVD-PI3.

6 TM Hoover Dam 4340

Calved: 2/11/14 Tattoo: 4340 17991346

#Hoover Dam
Erica of Ellston C124

#SydGen C C & 7
#+S A F Connection
SydGen Forever Lady 4087
#TC Gridiron 258
Erica of Ellston V65

TM MRS Burgess 8094
T&M MRS FOCUS4073

TM Midland 6015
#BR Midland
#T&M MRS Ext 0048
T&M FOCUS2025
T&M MRS Alberda T1029

BW	WW	Milk	YW	Act.BW	Adj.WW	Adj.YW
I+2.0	I+48	I+27	I+87			1190

Weaning (\$W)	Feedlot (\$F)	Calving Ease	Beef (\$B)
+35.63	+37.19	+3	

Owned By: T&M Angus Ranch, LLC, Argonia, Kan.

A moderate birth weight Hoover Dam son with a very strong bottom side. Look at this bull for good steers and heifers that will make great cows. Adj. YW 1190. Semen tested, no creep. Negative for BVD-PI3.

Chisholm Trail Angus Association

7

TM Hoover Dam 4339

Calved: 2/10/14 Tattoo: 4339 17991309

#SydGen C C & 7
#Hoover Dam
#Erica of Ellston C124

#S A F Connection
SydGen Forever Lady 4087
#TC Gridiron 258
Erica of Ellston V65

#+Woodhill Foresight
TM MRS Erica 0047
TM Mrs Erica 6059

#Papa Forte 1921
Bon View Gammer 85
T&MNEW Design 4018
T&M MRS Alberda TRAVELER3011

BW	WW	Milk	YW	Act.BW	Adj.WW	Adj.YW
+0.4	+46	+23	+86			
Weaning (\$W)		Feedlot (\$F)		Calving Ease		Beef (\$B)
+40.57		+40.84		+6		

Owned By: T&M Angus Ranch, LLC, Argonia, Kan.
A low birth weight bull. Semen tested, no creep. Negative for BVD-PI.



Lot 8: BRR Final Net Answer 1402

8

BRR Final Net Answer 1402

Calved: 2/28/14 Tattoo: 1402 17912363

#Sitz Traveler 8180
#S A V Final Answer 0035
S A V Emulous 8145

#G D A R Traveler 71
Sitz Everelda Entense 1137
Bon View Bando 598
S A V Sky Emulous 2124

#S A V Net Worth 4200
BRR Net Worth Blackcap 1101
Waf Katelyn 0111

S A V 8180 Traveler 004
S A V May 2410
W A F Bon View 593
S A V Dakota Blackcap 2188

BW	WW	Milk	YW	Act.BW	Adj.WW	Adj.YW
I+2.3	I+54	I+24	I+91	65	771	1096
Weaning (\$W)		Feedlot (\$F)		Calving Ease		Beef (\$B)
+48.68		+38.88		+5		

Owned By: BRR Angus Farm, Red Rock, Okla.
Don't miss this calving ease bull! Plus lots of thickness, muscle, bone, good temperament and pedigree. His sire, Final Answer, is the number one registration sire of the breed because of his calving ease, early explosive growth, deep ribbed and easy-fleshing calves. 1402's dam is a Net Worth daughter with length, rib and beautiful udder. She produced her first calf, 1402, with 105 ratio. Super mother!

9

Meadowmeres Prime Cut B334

Calved: 3/01/14 Tattoo: B334 17939891

#Summitcrest Prime Cut 1G42
#Three Trees Prime Cut 0145
#Black Tooth Lady B 380

Finks 5522-6148
Summitcrest Barbara 0B74
#Basin Rainmaker 654X
Bear Claw P P Lady 351

Lemar Dakota Gold 18T
Meadowmeres Lena S26 W79 A82
Meadowmeres Lena ELDs26 W79

#Mytty In Focus
Lemar Peggy 74R
Rito 616 of 4B20 6807
Meadowmeres Lena Eld S26

BW	WW	Milk	YW	Act.BW	Adj.WW	Adj.YW
I+0.5	I+48	+22	I+87	85	730	1143
Weaning (\$W)		Feedlot (\$F)		Calving Ease		Beef (\$B)
+45.56		41.25		+7		

Owned By: Meadowmere Angus, Westmoreland, Kan.
Out of a first-calf heifer and he has done very well. Sired by Prime Cut, a calving ease sire and a standout for feed efficiency in the Angus Alliance program. Negative for BVD-PI.

10

CLR Coalition 413

Calved: 3/06/14 Brand: 413 17920770

#K C F Bennett Coalition SCC
Stenberg Coalition 509
M Parl

#Sitz Alliance 6595
#Pleasant Pill of Conanga
E P Traveler 415
Miss April 403

#Mytty In Focus
CLR Lana 704
CLR Lana

#S A F Focus of E R
Mytty Countess 906
#S S Objective T510 0T26
#Molitor 2928 Lana 371-753

BW	WW	Milk	YW	Act.BW	Adj.WW	Adj.YW
I-1.5	I+56	I+25	I+94	74		
Weaning (\$W)		Feedlot (\$F)		Calving Ease		Beef (\$B)
+58.93		+48.29		+9		

Owned By: C Lewis Ranch, Derby, Kan.
Actual birth weight was 74 pounds.

11

TM Woodhill Foresight 4379

Calved: 3/11/14 Tattoo: 4379 17989636

#Woodhill Foresight
TM Woodhill Foresight 2319
T&MMRSRUTH4044

#Papa Forte 1921
Bon View Gammer 85
#Alberda Traveler 416
#T M Ruth N L 14

#Mytty In Focus
TM MRS Linda 9001
#T&M MRS Linda 7004

#S A F Focus of E R
Mytty Countess 906
Rito 616 of 4B20 6807
T&M MRS Futuredirection 5031

BW	WW	Milk	YW	Act.BW	Adj.WW	Adj.YW
I+1.1	I+51	I+24				
Weaning (\$W)		Feedlot (\$F)		Calving Ease		Beef (\$B)

Owned By: T&M Angus Ranch, LLC, Argonia, Kan.
A low birth weight grandson of Woodhill Foresight with a high maternal bottom side. Look at this bull for heifers or cows. Heifer calves will make great cows. Semen tested, no creep. Negative for DVD.

Chisholm Trail Angus Association



Lot 12: BRR Rito Saugahatchee 1404

12 BRR Rito Saugahatchee 1404

Calved: 4/0314 Tattoo: 1404 17912365

+Rito 707 of Ideal 3407 7075 #R R Rito 707
 +S A V 707 Rito 9969 Ideal 3407 of 1418 076
 BR Polly 8077-472 #Papa Equator 2928
 +VDAR Polly 8077

#Leachman Saugahatchee 3000C #N Bar Emulation EXT
 BRR Saugahatchee Blkcp 0619 Leachman B C 7100
 Waf Katelyn 0111 W A F Bon View 593
 S A V Dakota Blackcap 2188

BW	WW	Milk	YW	Act.BW	Adj.WW	Adj.YW
I+4.3	I+46	I+19	I+89	65	700	1086
Weaning (\$W)		Feedlot (\$F)		Calving Ease		Beef (\$B)
+22.38		+48.06		-3		

Owned By: A truly thick, heavy-muscled, deep-sided, performance-bred docile Rito 9969 son. A true commercial cattlemen's bull who sells pounds and demands thick, easy-fleshing cattle. Check his numbers from BW 65 to 700 adjusted weaning weight and 1086 adjusted yearling weight. His dam, a Saugahatchee daughter, has produced five calves with a 101 ratio.

**BRR Angus,
 Red Rock,
 Okla.**



Lot 13: BRR Ritos Net Worth 1407

13 BRR Ritos Net Worth 1407

Calved: 5/04/14 Tattoo: 1407 17912368

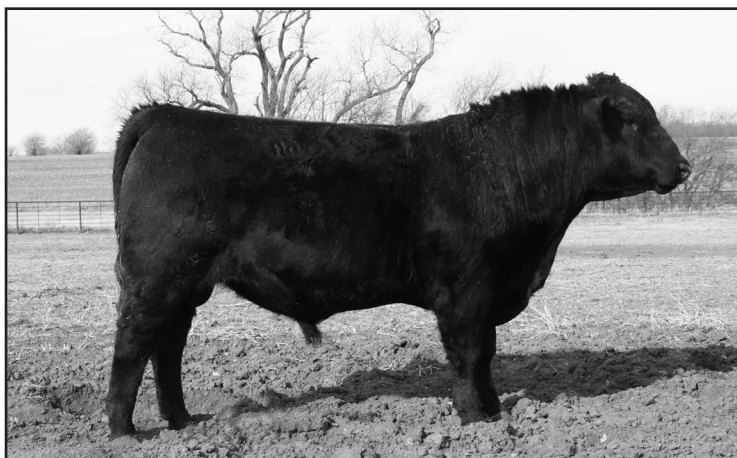
+Rito 707 of Ideal 3407 7075 #R R Rito 707
 +S A V 707 Rito 9969 Ideal 3407 of 1418 076
 BR Polly 8077-472 #Papa Equator 2928
 +VDAR Polly 8077

#S A V Net Worth 4200 #S A V 8180 Traveler 004
 BRR Net Worth Raptore 0903 +S A V May 2410
 O G L Miss Sooner 863-658 O G L Raptore 651
 O G L Miss Sooner BC 658-926

BW	WW	Milk	YW	Act.BW	Adj.WW	Adj.YW
I+5	I+60	I+18	I+105	70	726	1096
Weaning (\$W)		Feedlot (\$F)		Calving Ease		Beef (\$B)
+29.95		+64.88		-5		

Owned By: 1407 should be a favorite among commercial cattlemen to sell pounds and demand thick, deep, easy-fleshing cattle. He is a powerful outcross sire and will inject performance, appetite and gainability to his progeny. His dam is a Net Worth daughter, sire of muscle with a scanned 365-day REA of 17.2 inches with an IMF ratio of 139. She has produced three calves with 103 ratio. Wow!

**BRR Angus,
 Red Rock, Okla.**



Lot 14: BRR Waylons Marathon 1409

14 BRR Waylons Marathon 1409

Calved: 5/12/14 Tattoo: 1409 17912394

GAR-EGL Protege #+Rito 112 of 2536 Rito 616
 Baldridge Waylon W34 L B 6807 Isabel 339
 Baldridge Blackcap T163 #+Woodhill Foresight
 Baldridge Blackcap P326

#B C Marathon 7022 O C C Kirby 633K
 BRR Marathon Miss Pride 0817 Gibbet Hill Mignonne E37
 +Davis Pride 8211 #+V D A R Lucys Boy
 +Harmony Hill Hyl Pride 141

BW	WW	Milk	YW	Act.BW	Adj.WW	Adj.YW
I+3.9	I+57	I+22	I+100	70	716	1097
Weaning (\$W)		Feedlot (\$F)		Calving Ease		Beef (\$B)
+42.35		+58.58		+0		

Owned By: Here's a long, thick, muscled Baldridge Waylon son. Waylon is a newly-promoted sire from Express Ranches. He is producing high-performing and high carcass quality cattle. His \$B of +154.15 currently ranks him among the top bulls in the main Angus Sire list. 1409 has a BW of 70, 3.48 gain, 1097 Adj YW and +22 milk. His dam has produced two calves with 100 ratio.

**BRR Angus,
 Red Rock,
 Okla.**

Chisholm Trail Angus Association



Lot 15: BRR Waylons Twister 1412

15 BRR Waylons Twister 1412

Calved: 5/23/14 Tattoo: 1412 17912399

GAR-EGL Protege
Baldrige Waylon W34
Baldrige Blackcap T163

#+Rito 112 of 2536 Rito 616
L B 6807 Isabel 339
#+Woodhill Foresight
Baldrige Blackcap P326

#Da Es Ro Twister 0627
BRR Twister Erick 1001
BRR Structure Erick 0718

#Krugerrand of Donamere 490
#De Kap Rito Burgess 682
#G 13 Structure
BRR Lucys Boy Erick 0223

BW	WW	Milk	YW	Act.BW	Adj.WW	Adj.YW
I+3.3	I+56	I+23	I+98	65	730	1100
Weaning (\$W)		Feedlot (\$F)		Calving Ease		Beef (\$B)
+44.03		+55.60		+2		

Owned By: A son of Baldrige Waylon that ranks as one of the top AI sires for \$B. 1412 will add performance in a moderate-framed, easy-fleshing package with scrotal and docility. He's a deep, thick bull that will catch the eye of commercial cattlemen with his performance of BW 65, gain of 3.52, yearling 1100 pounds and milk +23. His dam has produced two calves with a 104 ratio.

**BRR Angus,
Red Rock, Okla.**



Chisholm Trail has great help from consignors in the back pushing cattle through including 7HAR Harrison Angus Ranch's Eric Harrison (right).

16 7HAR Net Worth 3

Calved: 6/03/14 Brand: H064 18165294

#S A V 8180 Traveler 004
#S A V Net Worth 4200
+S A V May 2410

#Sitz Traveler 8180
+Boyd Forever Lady 8003
#+S A F 598 Bando 5175
S A V May 6269

7 H A R Ext 9
7 H A R Adellette 18
7 H A R Adelette 13

N Bar Emulation EXT
7 H A R Lady Bess 22
#B/R New Design 036
7 H A R Adelette 8

BW	WW	Milk	YW	Act.BW	Adj.WW	Adj.YW
I+4.9	I+41	I+18	I+80	85	448	864
Weaning (\$W)		Feedlot (\$F)		Calving Ease		Beef (\$B)
+20.41		+28.88		-6		+124.19

Owned By: We have been using Net Worth to help balance EPD's in the carcass weight and quality areas. This bull is a good example with CW in the top 20% of the breed. His \$EN is in the top 10% of the breed, which gives him a huge \$B of +124.19 in the top 30% of the breed. Sure to produce calves that will make you money.

**7HAR Harrison
Angus Ranch,
Howard, Kan.**



Lot 17: BRR Ritos Emblazon 1415

17 BRR Ritos Emblazon 1415

Calved: 6/05/14 Tattoo: 1415 17912402

+Rito 707 of Ideal 3407 7075
S A V 707 Rito 9969
BR Polly 8077-472

#R R Rito 707
Ideal 3407 of 1418 076
#Papa Equator 2928
+VDAR Polly 8077

O C C Emblazon 854E
BRR Emblazon Peggy Sue 0908
BRR Traveler Peggy Sue 0707

#D H D Traveler 6807
Dixie Erica of C H 1019
#S A V 8180 Traveler 004
+Davis Peggy Sue 6303

BW	WW	Milk	YW	Act.BW	Adj.WW	Adj.YW
I+5.1	I+54	I+20	I+99	70	713	1094
Weaning (\$W)		Feedlot (\$F)		Calving Ease		Beef (\$B)
+26.05		+58.88		-6		

Owned By: A powerful individual that offers outcross genetics. He brings performance, carcass traits and pedigree from his sire Rito 9969. He is a massive, high-volumed beef machine with gainability and fleshing ability. On the dam's side the Emblazon adds more muscle, thickness, volume and docile temperament. 1415 had a 3.46 gain, Adj WW of 713 and Adj YW of 1094. Check this one out.

**BRR Angus,
Red Rock,
Okla.**

Chisholm Trail Angus Association

18

7HAR Thunder 4

Calved: 6/06/14 Brand: H104 18165295

#Baldridge Kaboom K243 KCF #Jauer 353 Traveler 589 27
 #Connealy Thunder Pleasanta of Conanga 736
 Parka of Conanga 241 #Bon View Bando 598
 Partina of Conanga 6237

TC Total 410 #Bon View New Design 208
 7HAR Erica 88 +TC Erica Eileen 2047
 7HAR Erica 82 #Connealy Lead On
 7 H A R Erica 78

BW	WW	Milk	YW	Act.BW	Adj. WW	Adj.YW
I+1.9	I+42	I+21	I+85	80	405	797

Zoetis 50K: BW: 63 WW: 51 YW: 34 Milk: 57 RE: 29

Weaning (\$W)	Feedlot (\$F)	Calving Ease	Beef (\$B)
+32.14	+30.53	+2	+122.65

Owned By: Thunder has proven to be a cow maker. This bull has a heifer pregnancy EPD in the top 4% of the breed. It doesn't stop there. He excels in 15 other markers, notably CEM, \$EN, CW, Marbling, Ribeye and Fat. All together posting \$G in top 10%, \$QG in top 20%, \$YG in top 10% adding up to another huge \$B of \$122.24 in the top 30% of the breed.

7HAR Harrison Angus Ranch, Howard, Kan.



Lot 21: BRR Ritos Predominant 1416

19

7 H A R Pioneer 1

Calved: 6/08/14 Brand: H124 18165296

#S A V Final Answer 0035 #Sitz Traveler 8180
 #S A V Pioneer 7301 S A V Emulous 8145
 S A V Blackbird 5297 #+Boyd New Day 8005
 S A V Blackbird 1082

#Bon View New Design 878 #B/R New Design 036
 7har Edwina 125 Bon View Gammer 85
 7 H A R Edwina 77 7 H A R Ext 9
 7 H A R Edwina 30

BW	WW	Milk	YW	Act.BW	Adj.WW	Adj.YW
I+0.5	I+52	I+21	I+96	70	557	923

Zoetis 50K: BW: 52 WW: 51 YW: 36 Milk: 52 RE: 60

Weaning (\$W)	Feedlot (\$F)	Calving Ease	Beef (\$B)
+50.01	+55.88	+10	+105.45

Owned By: Our first calf from Pioneer didn't disappoint. Above breed average in CED in top 15%, birth weight top 30%, weaning weight top 40% and yearling weight top 35%. His heifer pregnancy is in the top 25%, scrotal top 10%, CEM top 20% and most other markers above average. A good all-around bull.

7HAR Harrison Angus Ranch, Howard, Kan.

21

BRR Ritos Predominant 1416

Calved: 6/10/14 Tattoo: 1416 17912403

+Rito 707 of Ideal 3407 7075 #R R Rito 707
 S A V 707 Rito 9969 Ideal 3407 of 1418 076
 BR Polly 8077-472 #Papa Equator 2928
 +VDAR Polly 8077

S A V 004 Predominant 4438 #S A V 8180 Traveler 004
 BRR Predominant Erie 0904 S A V Emblynette 1182
 BRR Russ Miss Erie 0411 Gdar Russ 8346
 B R R Extraordinary ERIE9501

BW	WW	Milk	YW	Act.BW	Adj.WW	Adj.YW
I+4.3	I+53	I+19	I+100	65	716	1086

Weaning (\$W)	Feedlot (\$F)	Calving Ease	Beef (\$B)
+28.51	+60.31	+9	+91.42

Owned By: An outstanding Rito 9969 son that will catch your attention. He is stout, great profiling, natural thickness and abundant muscle. 1416's BW is 65, gain is 3.50, Adj WW is 716 and Adj YW is 1086. His dam, a Predominant daughter, is known for thickness, muscle and bone. She has produced three calves for a 101 ratio.

BRR Angus, Red Rock, Okla.

20

7HAR Thunder 5

Calved: 6/09/14 Brand: H134 18165297

#Baldridge Kaboom K243 KCF #Jauer 353 Traveler 589 27
 #Connealy Thunder Pleasanta of Conanga 736
 Parka of Conanga 241 #Bon View Bando 598
 Partina of Conanga 6237

7 H A R New Design 18 #B/R New Design 036
 7 H A R Edwina 95 7 H A R Lady Bess 22
 7 H A R Edwiha 31 7 H A R Prompter 3
 7 H A R Edwina 13

BW	WW	Milk	YW	Act.BW	Adj.WW	Adj.YW
I-0.1	I+31	I+23	I+58			

Zoetis 50K: BW: 8 WW: 96 YW: 94 Milk: 71 RE: 68

Weaning (\$W)	Feedlot (\$F)	Calving Ease	Beef (\$B)
+31.56	-2.66	+11	+57.73

Owned By: A calving-ease bull in top 15% CED, top 25% CEM. Above average for heifer pregnancy and a \$EN in top 10%. An easy keeper.

7HAR Harrison Angus Ranch, Howard, Kan.



2015 Chisholm Trail Sale crowd

Chisholm Trail Angus Association



Lot 22: BRR Ritos Casey 1417

24 7HAR In Focus 13

Calved: 6/30/14 Brand: H224 18165300

#Mytty In Focus
7har in Focus 3
7 H A R Lady Bess 51

#S A F Focus of E R
Mytty Countess 906
#B/R New Design 036
7 H A R Lady Bess 40

Mytty In Focus
7har Edwina 121
7 H A R Edwina 93

#S A F Focus of E R
Mytty Countess 906
7 H A R New Design 18
7 H A R Edwina 30

BW	WW	Milk	YW	Act.BW	Adj.WW	Adj.YW
I-0.6	I+56	I+20	I+93	75	614	990
Zoetis 50K: BW: 11 WW: 24 YW: 40 Milk: 81 RE: 90						
Weaning (\$W)		Feedlot (\$F)		Calving Ease		Beef (\$B)
+51.69		+53.18		+11		+112.29

Owned By: **7HAR Harrison Angus Ranch, Howard, Kan.**

Maybe the best bull we are offering. All but five EPD markers are above breed average. Calving ease, growth and quality grade are through the roof. His scrotal is in the top 1% of breed. This is a "can't go wrong bull" for all of your herd.



Lot 25: BRR Heritages Marathon 1419

22 BRR Ritos Casey 1417

Calved: 6/15/14 Tattoo: 1417 17912404

+Rito 707 of Ideal 3407 7075 #R R Rito 707
S A V 707 Rito 9969 Ideal 3407 of 1418 076
BR Polly 8077-472 #Papa Equator 2928
+VDAR Polly 8077

Da Es Ro Casey 629 #+Brost Power Drive
BRR Caseys Miss Lass 0615 Da Es Ro Burgess 657
Green Valley Lass V 89 #+Grubbs Mac Kenzie
Vermilion Lass 0223

BW	WW	Milk	YW	Act.BW	Adj.WW	Adj.YW
I+5	I+47	I+14	I+92	65	728	1098
Weaning (\$W)		Feedlot (\$F)		Calving Ease		Beef (\$B)
+13.17		+56.50		-5		

Owned By: **BRR Angus, Red Rock, Okla.**

A young bull with a lot of potential. He had a 3.50 gain and a 1098 Adj YW from a 65 birth weight. His sire, Rito 9969, is a massive beef machine and a unique and powerful outcross sire injecting gainability in his calves. His dam records a weaning ratio of 112 on four calves! 1417's grandmother was purchased from the Green Valley Farm in Montana and his mother, a Casey daughter, calved two calves at a 105 Ratio. Good job!

23 7HAR In Focus 10

Calved: 6/19/14 Brand: H164 18165298

Mytty In Focus #S A F Focus of E R
7har in Focus 3 Mytty Countess 906
7 H A R Lady Bess 51 #B/R New Design 036
7 H A R Lady Bess 40

#Connealy Lead On #Connealy Leadtime
7HAR Edwina 114 Eligence Plus of Conanga
7 H A R Edwina 35 7 H A R Prompter 3
7 H A R Edwina 6

BW	WW	Milk	YW	Act.BW	Adj.WW	Adj.YW
I+0.9	I+28	I+17	I+54	77	454	724
Zoetis 50K: BW: 38 WW: 91 YW: 90 Milk: 88 RE: 94						
Weaning (\$W)		Feedlot (\$F)		Calving Ease		Beef (\$B)
+18.35		+.69		+9		+45.68

Owned By: **7HAR Harrison Angus Ranch, Howard, Kan.**

A bull with many of his grandsires's qualities. Calving ease and low birth weight. Docility 25%, scrotal 40% and a \$EN of top 4% of breed make him a productive easy keeper.

25 BRR Heritages Marathon 1419

Calved: 7/03/14 Tattoo: 1419 17912406

#CAR Duke 104 #Car Tracker 904
S A V Heritage 6295 #C A R Miss Raindancer 421
S A V Blackcap May 4136 #S A V 8180 Traveler 004
#+S A V May 2397

BRR Marathon Elixir 0701 #B C Marathon 7022
BRR Marathon Krugerrand 0918 BRR Elixir Ms Blackcap 0335
Waf Madge 8002 #Krugerrand of Donamere 490
Top Madge 112

BW	WW	Milk	YW	Act.BW	Adj.WW	Adj.YW
I+4.0	I+59	I+20	I+106	65	818	1088
Weaning (\$W)		Feedlot (\$F)		Calving Ease		Beef (\$B)
+41.30		+59.71		-4		

Owned By: **BRR Angus, Red Rock, Okla.**

1419 is a high-octane, proven son of SAV Heritage. He is a leader for growth, performance, length of body, muscle and power. 1419 had a BW of 65, WW gain of 4.03, Adj WW ratio of 106, Adj YW of +100 and Milk of +20. His dam has produced two calves with a 105 ratio. If you sell cattle by the pound 1419 is a must!

Chisholm Trail Angus Association

26

7HAR In Focus 15

Calved: 7/20/14 Brand: H364 18165302

Mytty In Focus
7har in Focus 3
7 H A R Lady Bess 51

#S A F Focus of E R
Mytty Countess 906
#B/R New Design 036
7 H A R Lady Bess 40

7HAR Lead ON 7
7HAR Lady Bess 68
7 H A R Lady Bess 59

#Connealy Lead On
7 H A R Blackcap Rose 18
7 H A R Ext 9
7 H A R Lady Bess 36

BW	WW	Milk	YW	Act.BW	Adj.WW	Adj.YW
I+1.6	I+40	I+16	I+69	88	461	763

Zoetis 50K: BW: 70 WW: 73 YW: 81 Milk: 86 RE: 90

Weaning (\$W)	Feedlot (\$F)	Calving Ease	Beef (\$B)
+28.47	+23.11	+6	+94.13

Owned By: A bull to boost your quality grade while saving money on feed. Several EPD's above average.

7HAR Harrison Angus Ranch, Howard, Kan.

27

7HAR In Focus 16

Calved: 7/24/14 Brand: H394 18165303

Mytty In Focus
7har in Focus 3
7 H A R Lady Bess 51

#S A F Focus of E R
Mytty Countess 906
#B/R New Design 036
7 H A R Lady Bess 40

#Bon View New Design 878
7har Erica 90
7 H A R Erica 77

B/R New Design 036
Bon View Gammer 85
7 H A R Ext 9
7 H A R Erica 64

BW	WW	Milk	YW	Act.BW	Adj.WW	Adj.YW
I-1.0	I+37	I+15	I+69	70	459	843

Zoetis 50K: BW: 8 WW: 90 YW: 88 Milk: 93 RE: 72

Weaning (\$W)	Feedlot (\$F)	Calving Ease	Beef (\$B)
+30.02	+26.07	+13	+103.53

Owned By: Absolute calving ease. Top 5% in CED, 10% in BW and 5% in CEM. Put that together with 4% \$EN for calves that will produce without eating you out of the house and home, then giving back a \$QG in the top 20%.

7HAR Harrison Angus Ranch, Howard, Kan.

28

7HAR In Focus 17

Calved: 7/27/14 Brand: H404 18165304

Mytty In Focus
7har in Focus 3
7 H A R Lady Bess 51

#S A F Focus of E R
Mytty Countess 906
#B/R New Design 036
7 H A R Lady Bess 40

7HAR Lead ON 9
7har Lady Bess 70
7HAR Lady Bess 61

#Connealy Lead On
7 H A R Lady Bess 36
#Connealy Lead On
7 H A R Lady Bess 41

BW	WW	Milk	YW	Act.BW	Adj.WW	Adj.YW
I+0.4	I+41	I+16	I+78	70	421	754

Zoetis 50K: BW: 22 WW: 80 YW: 72 Milk: 91 RE: 82

Weaning (\$W)	Feedlot (\$F)	Calving Ease	Beef (\$B)
+38.22	+30.22	+7	+88.32

Owned By: A definite breeder with a scrotal of top 25% and CEM of 25% as well. Calving ease bred in from In Focus. He is also a bull with a \$EN in the top 4% of the breed to make good use of your feed.

7HAR Harrison Angus Ranch, Howard, Kan.

29

7HAR In Focus 18

Calved: 8/04/14 Brand: H434 18165305

Mytty In Focus
7har in Focus 3
7 H A R Lady Bess 51

#S A F Focus of E R
Mytty Countess 906
#B/R New Design 036
7 H A R Lady Bess 40

TC Total 410
7har Edwina 122
7 H A R Edwina 39

Bon View New Design 208
+TC Erica Eileen 2047
G T Expo
7 H A R Edwina 13

BW	WW	Milk	YW	Act.BW	Adj.WW	Adj.YW
I+0.5	I+46	I+18	I+80	82	485	858

Zoetis 50K: BW: 59 WW: 33 YW: 44 Milk: 18 RE: 95

Weaning (\$W)	Feedlot (\$F)	Calving Ease	Beef (\$B)
+30.35	+35.69	+10	+87.55

Owned By: Good calving ease in this bull as well. Mature weight and height in top 1% and 2% respectively. Excellent marbling at 35% and fat at 10% result in a \$QG in top 35%.

7HAR Harrison Angus Ranch, Howard, Kan.

30

Meadowmeres Future Focus 384

Calved: 8/25/14 Tattoo: B384 18086320

Yon Future Focus T219
Meadowmeres Future Focus
Meadowmeres Hytop G76I58W139

#Mytty In Focus
YON Hazel R133
#Perry Power Design 715
Meadowmeres Hytop G76 I58

#Genetics by Design 049
Meadowmeres Eileen T137 A92
Meadowmeres Eileen ELD T137

#B/R New Design 036
G G Clara 859
#Brooks Ext 792
Meadowmeres Eileen Eld R45

BW	WW	Milk	YW	Act.BW	Adj.WW	Adj.YW
I+0	+49	I+22	I+85	75	627	1037

Zoetis 50K: BW: 8 WW: 90 YW: 88 Milk: 93 RE: 72

Weaning (\$W)	Feedlot (\$F)	Calving Ease	Beef (\$B)
+45.73	+36.98	+9	

Owned By: A first calf from a heifer in one of our best cow families with a really good udder. Negative for BVD-PI.

Meadowmere Angus, Westmoreland, Kan.

31

DA 021 Safeguard B106

Calved: 9/06/14 Tattoo: B106 18249057

#+G A R New Design 5050
PA Safeguard 021
#+PA Loma Marshall 2905-730

#B/R New Design 036
G A R Precision 706
#+Woodhill Foresight
Petes 2905 Dateline Marshall

+B C Maverick 2702 ET
Da Maverick Miss Erica 032
DA 104J Miss Erica 604

#+O C C Emblazon 854E
Gibbet Hill Mignonne E37
Basin Max 104J
#DA 1743 Miss Erica 426

BW	WW	Milk	YW	Act.BW	Adj.WW	Adj.YW
I-0.9	+45	I+19	I+92	70	546	1104

Zoetis 50K: BW: 22 WW: 80 YW: 72 Milk: 91 RE: 82

Weaning (\$W)	Feedlot (\$F)	Calving Ease	Beef (\$B)
+33.71	+52.41	+3	

Owned By: The sire of this Safeguard son has one of the highest docility ratings in the Angus breed at +28. His scrotal rating is +1.52. His progeny are all moderate framed. DA Safeguard 021 progeny have enhanced EPD's and rank at the top of the Angus breed in most key performance, carcass and convenience traits. We are offering four half brothers in this sale. They are lots 35, 37 and 38.

Duncan Angus, Winfield, Kan.

Chisholm Trail Angus Association



2015 Chisholm Trail Sale crowd

34 DA 8088 Complement B121

Calved: 9/13/14 Brand: B121 18248940

#Basin Franchise P142 #C A Future Direction 5321
EF Complement 8088 Basin Chloe 812L
+EF Everelda Entense 6117 #BR Midland
+H F Everelda Entense 869

Stenberg Coalition 509 #K C F Bennett Coalition SCC
Da Coalition Miss Imogene108 M Parl
Da 187 Miss Imogene 936 #KMK Alliance 6595 I87
DA Miss Imogene 033

BW	WW	Milk	YW	Act.BW	Adj.WW	Adj.YW
I+2.6	I+59	I+25	I+107	95	651	1150

Weaning (\$W)	Feedlot (\$F)	Calving Ease	Beef (\$B)
+48.14	+70.21	+6	

Owned By: **Duncan Angus, Winfield, Kan.**
ER Complement 8088 is moderate-framed, wide-based curve bender with a super stout, soft look with carcass appeal. He ranks in the top 1% of breed for calving ease. DA 8088 Complement B120 has a 1/2 brother in this sale. He is a DA Complement B134, lot ??

32 PF Ten X 2402 4332

Calved: 9/11/14 Tattoo: 4332 17891903

#Mytty In Focus
A A R Ten X 7008 S A
#A A R Lady Kelton 5551

#S A F Focus of E R
Mytty Countess 906
S A V Adaptor 2213
H S A F Lady Kelton 504B

Connealy Final Product
Werner Barbaramere Jet 2402
Werner Barbaramere Jet 0020

Connealy Product 568
Ebonista of Conanga 471
#S A V 8180 Traveler 004
#Sitz Barbaramere Jet 20T

BW	WW	Milk	YW	Act.BW	Adj.WW	Adj.YW
I+0.6	I+65	I+24	I+120	72	720	

Weaning (\$W)	Feedlot (\$F)	Calving Ease	Beef (\$B)
+55.58	+90.70	+6	

Owned By: **Clinton Steffen, Conway Springs, Kan.**
A little extra special deal here. An own son of the great Ten X. Calving ease and tremendous growth built right in! This fall yearling is a little more moderate in his frame size. A bull that won't be so big as to break down your heifers yet mature enough to cover 15-20 head. Numbers off the chart as this bull has a birth to weaning spread of nearly 120 lb. Practically unheard of! Highly recommended for heifers or cows. Fertility tested.

33 DA CC&7 B120

Calved: 9/13/14 Brand: B120 18248902

#S A F Connection
#SydGen C C & 7
SydGen Forever Lady 4087

#+SVF Gdar 216 LTD
+S A F Royal Queen 5084
#SydGen 1407 Corona 2016
+S A F Forever Lady 8292

#+S A F Strategy 9015
#Da 9015 Blackbird 829
#DA 878 Blackbird 409

#S A F Focus of E R
+S A F Royal Queen 5084
#Bon View New Design 878
DA 6595 Blackbird 139

BW	WW	Milk	YW	Act.BW	Adj.WW	Adj.YW
I-0.1	I+46	I+29	I+95	70	602	1143

Weaning (\$W)	Feedlot (\$F)	Calving Ease	Beef (\$B)
+41.79	+57.21	+2	

Owned By: **Duncan Angus, Winfield, Kan.**
Sydgen CC&7 is one of the breed's most popular and well-known sires, ranking fourth in registrations in fiscal 2012 and achieving Pathfinder Sire status in his first year of eligibility. Breeders love his docile daughters and his thick, long-bodied sons are always in demand. CC&7 impresses visitors with his docility of +34, power and muscle.

35 DA Safeguard B124

Calved: 9/15/14 Tattoo: B124 18249054

#+G A R New Design 5050
PA Safeguard 021
#+PA Loma Marshall 2905-730

#B/R New Design 036
G A R Precision 706
#+Woodhill Foresight
Petes 2905 Dateline Marshall

BRR Krugerrand Gunsmoke 0531
Da 0531 Primrose Charm 055
DA Primrose Charm 304

BRR Krugerrand Rito 0307
B R R Gunsmoke Katelyn 0205
G T Maximum
O R R Primrose Charm 7132

BW	WW	Milk	YW	Act.BW	Adj.WW	Adj.YW
I+4.3	I+48	I+21	I+91	95	599	1109

Weaning (\$W)	Feedlot (\$F)	Calving Ease	Beef (\$B)
+25.72	+48.47	-1	

Owned By: **Duncan Angus, Winfield, Kan.**
For info on DA Safeguard B124 see the info on Lot 31, DA 021 Safeguard B106. Another one of the four half brothers being offered as lots 31, 35, 37 and 38.

36 SF Final Answer 452

Calved: 9/16/14 Brand: 452 18346923

#S A V Final Answer 0035
Buford Final Answer W9552
BUF Lucy 7365

#Sitz Traveler 8180
S A V Emulous 8145
Basin Yellowstone P090
J Bar 7 Maddi Jo 4167

#SydGen Mandate 6079
Mignonne of SF 129
Mignonne of SF 172

#S S Objective T510 0T26
SydGen Gina 4235
#+A&b Yukon 7150
#Molitor 473 Mignonne 6384

BW	WW	Milk	YW	Act.BW	Adj.WW	Adj.YW
I+1.9	I+59	I+23	I+105	76	683	

Weaning (\$W)	Feedlot (\$F)	Calving Ease	Beef (\$B)
+49.52	+66.45	+7	

Owned By: **Steffen Farms, Conway Springs, Kan.**
An exceptional son of our senior herd sire. This bull has been a standout his whole life. Long, tall and thick, he will get the job done. Whether you're selling calves at weaning, off the rail or just needing replacement heifers you can't go wrong with this one. Recommended for heifers or cows. Fertility tested.

Chisholm Trail Angus Association

37

DA Safeguard B125

Calved: 9/16/14 Brand: B125 18249058

#+G A R New Design 5050 #B/R New Design 036
PA Safeguard 021 G A R Precision 706
#+PA Loma Marshall 2905-730 #+Woodhill Foresight
Petes 2905 Dateline Marshall

KMK Alliance 6595 I87 Sitz Alliance 6595
Da 187 Miss Esso 028 G A R Ext 916
Da Miss Esso 06 Gdar Forever Sidney 228D
+Davids Miss Esso 933

BW	WW	Milk	YW	Act.BW	Adj.WW	Adj.YW
I+3.3	I+48	I+23	I+89	95	570	1021

Weaning (\$W)	Feedlot (\$F)	Calving Ease	Beef (\$B)
+34.43	+44.85	+2	

Owned By: More info about the sire of DA Safeguard B125 can be found with Lot 31, DA 021 Safeguard B106. Another half brother of the four bulls we are offering in this sale, lots 31, 35 and 38.

**Duncan Angus,
Winfield, Kan.**

38

DA Safeguard B129

Calved: 9/16/14 Brand: B129 18249055

#+G A R New Design 5050 #B/R New Design 036
PA Safeguard 021 G A R Precision 706
#+PA Loma Marshall 2905-730 #+Woodhill Foresight
Petes 2905 Dateline Marshall

#KMK Alliance 6595 I87 #Sitz Alliance 6595
Da 187 Barbaramere 038 #+G A R Ext 916
DA 616 Barbaramere 424 #Rito 616 of 4B20 6807
Da Forever Barbaramere 09

BW	WW	Milk	YW	Act.BW	Adj.WW	Adj.YW
I-0.5	I+45	I+21	I+88	75	562	1064

Weaning (\$W)	Feedlot (\$F)	Calving Ease	Beef (\$B)
+37.60	+45.14	+5	

Owned By: See info on sire of DA 021 Safeguard B129, lot number 31, DA 021 Safeguard B106. Another half brother of the four we are offering, lots 31, 35, 37 and this lot, 38.

**Duncan Angus,
Winfield, Kan.**

39

DA Complement B134

Calved: 9/19/14 Tattoo: B134 18248944

#Basin Franchise P142 #C A Future Direction 5321
EF Complement 8088 Basin Chloe 812L
+EF Everelda Entense 6117 #BR Midland
+H F Everelda Entense 869

#HA Program 5652 HA Future Direction 3540
Da Program Blackbird 12 +HA Blackcap Lady 2782
#Da 9015 Blackbird 829 #+S A F Strategy 9015
#DA 878 Blackbird 409

BW	WW	Milk	YW	Act.BW	Adj.WW	Adj.YW
I+3.0	I+60	I+24	I+107	95	672	1115

Weaning (\$W)	Feedlot (\$F)	Calving Ease	Beef (\$B)
+46.75	+69.48	+10	

Owned By: DA Complement B134's sire, EF Complement 8088, ranks in the top 1% of the Angus breed for calving ease. He is a super stout, soft-looking bull with carcass appeal. DA Complement B134 has a half brother in this sale. He is DA 8088 Complement B121, lot ??

**Duncan Angus,
Winfield, Kan.**

40

SF Final Answer 454

Calved: 9/20/14 Brand: 454 18346924

#S A V Final Answer 0035 #Sitz Traveler 8180
Buford Final Answer W9552 S A V Emulous 8145
BUF Lucy 7365 Basin Yellowstone P090
J Bar 7 Maddi Jo 4167

SF New Standard 72 #LCC New Standard
Meadowmeres Hytop X20 #Angela Of S F 180
Susan of SF 273 Romans Empire 403
Meadowmeres Hyacinth E12MT

BW	WW	Milk	YW	Act.BW	Adj.WW	Adj.YW
+0.5	+53	+21	+94	72	669	

Weaning (\$W)	Feedlot (\$F)	Calving Ease	Beef (\$B)
+46.28	+50.40	+7	

Owned By: Look at the thickness down the top and through the round, this is a real meat machine. These Final Answer sons really pack on the pounds. Out of a really nice cow. Highly recommended for heifers or cows. Fertility tested.

**Steffen Farms,
Conway Springs,
Kan.**

41

SF Final Answer 456

Calved: 10/01/14 Tattoo:456 18346922

#S A V Final Answer 0035 #Sitz Traveler 8180
Buford Final Answer W9552 S A V Emulous 8145
BUF Lucy 7365 Basin Yellowstone P090
J Bar 7 Maddi Jo 4167

SF New Standard 72 LCC New Standard
Apple of SF 929 Angela Of S F 180
Apple of SF 023 #Connealy Freightliner
Apple of S F 369

BW	WW	Milk	YW	Act.BW	Adj.WW	Adj.YW
I+0.5	I+54	I+24	I+99	74	686	

Weaning (\$W)	Feedlot (\$F)	Calving Ease	Beef (\$B)
+48.39	+58.88	+7	

Owned By: Bulls with a birth EPD of under 1.0 and WW EPD over 50 are really hard to find but here he is. Five decades of selection for calving ease, growth and maternal traits really show up here. By May these fall yearlings should be able to cover 15-20 heifers or cows with ease. Highly recommended for heifers or cows. Fertility tested.

**Steffen Farms,
Conway Springs,
Kan.**

42

RA 133 Focus

Calved: 10/03/14 Brand: R133 18210062

#S A F Focus of E R #S A F Fame
#Mytty In Focus G D A R Forever Lady 246
Mytty Countess 906 #Sitz Alliance 6595
Baldrige Countess 357

J R Rockn D Ambush 1511 #Rockn D Ambush 1531
Lyons Pride 8179 J R Blackcap 016B
Lyons Pride 5096 Ak V D A R New Trend 559
A L Pride 0087

BW	WW	Milk	YW	Act.BW	Adj.WW	Adj.YW
I+0.7	I+45	I+23	I+76	75	691	1118

Weaning (\$W)	Feedlot (\$F)	Calving Ease	Beef (\$B)
+46.95	+36.20	+7	+87.25

Owned By: Son of Mytty In Focus. Will make a good heifer bull.

**George and
Jason Russell,
Mulvane, Kan.**

Chisholm Trail Angus Association



Thank you to the sale block team including (left to right) Susie Steffens, Justin Brazle, Bill McIntire, John Brazle (on the microphone) and Leslie Brazle. Special thanks to the Brazle family and Winfield Livestock Auction for handling the Chisholm Trail Angus Sale each year.

46 CS Shooting Star 435

Calved: 10/16/14 Brand: 435 18350480

Sitz Upward 307R #Connealy Onward
Fred Shooting Star 2346 Sitz Henrietta Pride 81M
Freds Lucy 670 Mytty In Focus
Freds Lucy 451

#+H A Image Maker 0415 #Hero 6267 of R R 2418
SandPoint Blackbird 6124 H A Rito Blackcap 9038
BT Blackbird 173P #+B T Ultravox 297E
#BT Blackbird 227L

BW	WW	Milk	YW	Act.BW	Adj.WW	Adj.YW
I+1.4	I+56	I+33	I+103	72	763	
Weaning (\$W)		Feedlot (\$F)		Calving Ease		Beef (\$B)
+56.27		+64.88		+8		+141.78

Owned By:

**Clinton Steffen,
Conway Springs,
Kan.**

This bull represents the 3rd generation of the Steffen Farms program. This fall yearling has that "heifer bull" look. Smooth shouldered, clean-fronted and long through the hip. Out of an exceptional Sandpoint bred cow that is one of the heaviest milkers in the herd. A great set of numbers and a great-looking bull. Recommended for heifers or cows. Fertility tested.

44 DA 1329 Direction B146

Calved: 10/09/14 Tattoo: B146 18255675

TM Morgans Direction 9042 #Morgans Direction 111 9901
TM Direction 1329 T&M MRS New Design 2031
T&M MRS HI FLYER0006 #Summitcrest Hi Flyer 3B18
#T&M MRS Power Fix P 886

#+Dr J Analyst M250 #B C C Bushwacker 41-93
Da M250 Miss Erica 724 G A R Precision 706
#DA 1743 Miss Erica 426 DA Northern Improvement 2072
DA Miss Erica 042

BW	WW	Milk	YW	Act.BW	Adj.WW	Adj.YW
I+1.5	I+47	I+22	I+77	95	664	1110
Weaning (\$W)		Feedlot (\$F)		Calving Ease		Beef (\$B)
+43.66		+24.29		+2		

Owned By:

**Duncan Angus,
Winfield, Kan.**

DA 1329 Direction B146 has some pretty good EPD's for a cow bull. He has a half-brother selling in the sale today as lot 45.

47 CLR Pendleton 502

Calved: 12/15/14 Brand: 502 18262692

#S A V Final Answer 0035 #Sitz Traveler 8180
#HARB Pendleton 765 J H S A V Emulous 8145
#H A R B Black Lady 375 J H H A R B High Plains 975 JH
H A R B Black Lady 073 J H

CLR Alliance 014
CLR Burgess 204
CLR Burgess 004

CLR Alliance 401
CLR Lana 704
#S A V 8180 Traveler 004
Circle S Burgess 2017

BW	WW	Milk	YW	Act.BW	Adj.WW	Adj.YW
I-3.5	I+60	I+33	I+102	58		
Weaning (\$W)		Feedlot (\$F)		Calving Ease		Beef (\$B)
+70.55		+60.13		+15		

Owned By:

**C Lewis Ranch,
Derby, Kan.**

Actual birth weight was 58 pounds.

45 DA 1329 Direction B147

Calved: 10/11/14 Brand: B147 18255694

TM Morgans Direction 9042 #Morgans Direction 111 9901
TM Direction 1329 T&M MRS New Design 2031
T&M MRS HI FLYER0006 #Summitcrest Hi Flyer 3B18
#T&M MRS Power Fix P 886

DA 5204 Traveler 4735 R R Traveler 5204
Da 4735 Early Rose 715 Davids Miss Esso 933
DA 1743 Early Rose 556 DA 5321 Future DIRECTION1743
DA 6595 Early Rose 318

BW	WW	Milk	YW	Act.BW	Adj.WW	Adj.YW
I-0.3	I+35	I+23	I+61	85	614	1038
Weaning (\$W)		Feedlot (\$F)		Calving Ease		Beef (\$B)
+35.10		+4.97		+8		

Owned By:

**Duncan Angus,
Winfield, Kan.**

This is another TM Direction 1329 son. He is a half-brother to lot 44.

48 CLR Turbo 504

Calved: 12/20/14 Brand: 504 18262693

#S A F Directive #Millcreek Diversity
SydGen Turbo 6684 +S A F Royal Queen 5084
+G A R 616 Rito 2472 #Rito 616 of 4B20 6807
+G A R Precision 709

CLR Alliance 014
CLR Blackbird 205
CLR Blackbird 006

CLR Alliance 401
CLR Lana 704
CLR Alliance 401
CLR Blackbird 601

BW	WW	Milk	YW	Act.BW	Adj.WW	Adj.YW
I+0.9	I+59	I+20	I+107	77		
Weaning (\$W)		Feedlot (\$F)		Calving Ease		Beef (\$B)
+47.80		+70.21		+8		

Owned By:

**C Lewis Ranch,
Derby, Kan.**

Actual birth weight was 77 pounds.

Chisholm Trail Angus Association

49

CLR Safeguard 505

Calved: 12/20/14 Brand: 505 18262696

#+G A R New Design 5050 #B/R New Design 036
PA Safeguard 021 G A R Precision 706
#+PA Lorna Marshall 2905-730 #+Woodhill Foresight
Petes 2905 Dateline Marshall

CLR Alliance 104 CLR Alliance 401
CLR Lana 303 CLR Erica 801 Lizzy
CLR Lana 101 SydGen Mandate 6079
CLR Lana

BW	WW	Milk	YW	Act.BW	Adj.WW	Adj.YW
I+0.3	I+49	I+26	I+95	67		

Weaning (\$W)	Feedlot (\$F)	Calving Ease	Beef (\$B)
+44.11	+55.07	+6	

Owned By: Actual birth weight was 67 pounds.

**C Lewis Ranch,
Derby, Kan.**

52

CLR Turbo 506

Calved: 12/24/14 Tattoo: 506 18262688

#S A F Directive #Millcreek Diversity
SydGen Turbo 6684 +S A F Royal Queen 5084
+G A R 616 Rito 2472 #Rito 616 of 4B20 6807
+G A R Precision 709

#SydGen Mandate 6079 #S S Objective T510 0T26
CLR Blackbird 103 SydGen Gina 4235
CLR Blackbird 601 #+Rito 2V1 of 2536 1407
Molitor 411 Blkbird A295 722

BW	WW	Milk	YW	Act.BW	Adj.WW	Adj.YW
I+3.5	+53	+16	+105	90		

Weaning (\$W)	Feedlot (\$F)	Calving Ease	Beef (\$B)
+25.27	+70.83	+5	

Owned By: Actual birth weight was 90 pounds.

**C Lewis Ranch,
Derby, Kan.**

50

SF Final Answer 535

Calved: 12/20/14 Tattoo: 535 18346927

#S A V Final Answer 0035 #Sitz Traveler 8180
Buford Final Answer W9552 S A V Emulous 8145
BUF Lucy 7365 Basin Yellowstone P090
J Bar 7 Maddi Jo 4167

S Traveler 640 S Traveler E10 164
Barbara of SF 805 Susan of SF 273
Barbara of SF 63 #Summitcrest Hi Flyer 3B18
Barbara Fame Of S F 140

BW	WW	Milk	YW	Act.BW	Adj.WW	Adj.YW
I+2.1	I+56	I+21	I+93	80	777	

Weaning (\$W)	Feedlot (\$F)	Calving Ease	Beef (\$B)
+48.10	+46.47	+2	

Owned By: A really good Final Answer bred yearling. This bull looks like a cow man's bull! Out of one of our very best cows. Recommended for cows. Fertility tested.

**Steffen Farms,
Conway
Springs, Kan.**

53

SF Final Answer 534

Calved: 12/28/14 Tattoo: 534 18346925

#S A V Final Answer 0035 #Sitz Traveler 8180
Buford Final Answer W9552 S A V Emulous 8145
BUF Lucy 7365 Basin Yellowstone P090
J Bar 7 Maddi Jo 4167

Romans Empire 403 #G D A R Traveler 71
Susan of SF 273 Miss Romans Empire 617
Susan of S F 259 S&S Traveler 6807-1
P V 947 Susan 2113

BW	WW	Milk	YW	Act.BW	Adj.WW	Adj.YW
I+1.5	I+57	I+19	I+93	76	770	

Weaning (\$W)	Feedlot (\$F)	Calving Ease	Beef (\$B)
+49.84	+45.77	+4	

Owned By: Another nice Final Answer bred yearling. These calves really grew on the cow last summer and their calves will do the same for you. Out of a really attractive large-framed cow. Recommended for heifers or cows. Fertility tested. No creep.

**Steffen Farms,
Conway
Springs, Kan.**

51

SF Final Answer 536

Calved: 12/20/14 Tattoo: 536 18346926

#S A V Final Answer 0035 #Sitz Traveler 8180
Buford Final Answer W9552 S A V Emulous 8145
BUF Lucy 7365 Basin Yellowstone P090
J Bar 7 Maddi Jo 4167

SydGen Mandate 6079 #S S Objective T510 0T26
Barbara of SF 127 SydGen Gina 4235
Barbara Fame Of S F 140 #S A F Fame
Molitor 23-4 Barbara 9911

BW	WW	Milk	YW	Act.BW	Adj.WW	Adj.YW
I+1.4	I+62	I+23	I+106	78	797	

Weaning (\$W)	Feedlot (\$F)	Calving Ease	Beef (\$B)
+55.89	+66.14	+6	

Owned By: A truly superior yearling bull. This large-framed monster will absolutely add pounds to your calf crop! Out of a great young cow. This bull has been a standout since birth. Highly recommended for heifers or cows. Fertility tested. No creep.

**Steffen Farms,
Conway Springs,
Kan.**

54

SS Compliance C324

Calved: 1/05/15 Tattoo: C324 18162395

EF Complement 8088 #Basin Franchise P142
+CoX SS Compliance Z17T +EF Everelda Entense 6117
Callaways Ruby Tiffany 1512 #G A R Predestined
+B/R Ruby of Tiffany 2251

Poss Total Impact 745 TC Total 410
SS Clova Pride A927 Poss Blackcap 5116
TSS Clova Pride 162W #Mytty In Focus
SVF Shamrock Clov Pride 003T

BW	WW	Milk	YW	Act.BW	Adj.WW	Adj.YW
I+0.4	I+52	I+14	I+99	65	613	

Weaning (\$W)	Feedlot (\$F)	Calving Ease	Beef (\$B)
+42.60	+65.56	+9	+123.18

Owned By: A little different bloodline here but the same low birth weight, high growth that you've come to expect from Stephen Farms. This yearling bull has a really nicely balanced set of numbers and the phenotype to match. Highly recommended for heifers or cows. Fertility tested. No creep.

**Steffen Farms,
Conway
Springs, Kan.**

Chisholm Trail Angus Association

55

CLR Mandate 510

Calved: 1/14/15 Brand: 510 18262694

SydGen Mandate 6079 #S S Objective T510 OT26
CLR Mandate 102 SydGen Gina 4235
CLR Lady Eden 802 #Quaker Hill Objective 3J15
CLR Lady

CLR Alliance 014 CLR Alliance 401
CLR Erica 206 CLR Lana 704
CLR Erica 917 #HARB Pendleton 765 J H
CLR Erica 801 Lizzy

BW	WW	Milk	YW	Act.BW	Adj.WW	Adj.YW
I+1.5	I+61	I+29	I+109	79		

Weaning (\$W)	Feedlot (\$F)	Calving Ease	Beef (\$B)
+57.98	+72.53	+8	

Owned By: Actual birth weight was 79 pounds.

**C Lewis Ranch,
Derby, Kan.**

58

CLR Reserve 512

Calved: 1/20/15 Brand: 512 18262685

B/R New Day 454 #+Boyd New Day 8005
V A R Reserve 1111 B/R Ruby 1224
Sandpoint Blackbird 8809 Connealy Onward
Riverbend Blackbird 4301

HARB Pendleton 765 J H S A V Final Answer 0035
CLR Erica 917 H A R B Black Lady 375 J H
CLR Erica 801 Lizzy Quaker Hill Objective 3J15
Finks Erica 3276 1426 N D

BW	WW	Milk	YW	Act.BW	Adj.WW	Adj.YW
I+2.4	I+59	I+38	I+105	86		

Weaning (\$W)	Feedlot (\$F)	Calving Ease	Beef (\$B)
+60.65	+66.45	+5	

Owned By: Actual birth weight was 86 pounds.

**C. Lewis Ranch,
Derby, Kan.**

56

CLR Mandate 511

Calved: 1/17/15 Brand: 511 18262686

SydGen Mandate 6079 #S S Objective T510 OT26
CLR Mandate 102 SydGen Gina 4235
CLR Lady Eden 802 #Quaker Hill Objective 3J15
CLR Lady

#S A V 8180 Traveler 004 #Sitz Traveler 8180
CLR Burgess 004 +Boyd Forever Lady 8003
Circle S Burgess 2017 #Sitz Alliance 6595
Circle S Burgess 6067

BW	WW	Milk	YW	Act.BW	Adj.WW	Adj.YW
I+1.9	I+61	I+28	I+107	83		

Weaning (\$W)	Feedlot (\$F)	Calving Ease	Beef (\$B)
+56.76	+68.75	+6	

Owned By: Actual birth weight was 83 pounds.

**C Lewis Ranch,
Derby, Kan.**

59

RA151 Image Maker

Calved: 1/23/15 Brand: R151 18285934

Hero 6267 of R R 2418 #R R Hero 6267
H A Image Maker 0415 R R Everelda Entense 0413
H A Rito Blackcap 9038 H 96 Rito 2100 7371
H 96 Blackcap 3835

CLR Midland 702 BR Midland
Miss Bird Midland RA86 Finks Erica 3276 1426 N D
Miss Maximum B R04 Maximum George K19
Miss B600 of B143 B547

BW	WW	Milk	YW	Act.BW	Adj.WW	Adj.YW
I+1.1	I+49	I+24	84	75	595	918

Weaning (\$W)	Feedlot (\$F)	Calving Ease	Beef (\$B)
+46.76	+35.21	+8	

Owned By: A1'd son of Image Maker. This bull can be used on heifers.

**George and
Jason Russell,
Mulvane, Kan.**

57

RA148 Image Maker

Calved: 1/19/15 Brand: R148 18285931

Hero 6267 of R R 2418 #R R Hero 6267
H A Image Maker 0415 R R Everelda Entense 0413
H A Rito Blackcap 9038 H 96 Rito 2100 7371
H 96 Blackcap 3835

CLR Midland 702 #BR Midland
Blackbird Midland R69 Finks Erica 3276 1426 N D
Blackbird Equalizer R12 K W Equalizer 103
Blackbird Primo C J K28

BW	WW	Milk	YW	Act.BW	Adj.WW	Adj.YW
I+3.1	I+52	I+25	I+86	90	657	1060

Weaning (\$W)	Feedlot (\$F)	Calving Ease	Beef (\$B)
+45.26	+36.69	+3	

Owned By: BW 90 pounds. WW 657 pounds. YW 1060 pounds. This is an A.I. son of Image Maker. Best to be used on cows. This bull will add some pounds to your calves.

**George and
Jason Russell,
Mulvane, Kan.**

60

Meadowmeres Complement B45

Calved: 1/24/15 Tattoo: B45 18262150

#Basin Franchise P142 #C A Future Direction 5321
EF Complement 8088 Basin Chloe 812L
+EF Everelda Entense 6117 #BR Midland
+H F Everelda Entense 869

Three Trees Prime Cut 0145 #Summitcrest Prime Cut 1G42
Meadowmeres Erica X250 #Black Tooth Lady B 380
Meadowmeres Erica EL301D Plowman 1627 of Millbrae SAR
Blackbird Primo C J K28

BW	WW	Milk	YW	Act.BW	Adj.WW	Adj.YW
I-0.4	I+51	I+18	I+96	80	582	

Weaning (\$W)	Feedlot (\$F)	(\$QG)	Beef (\$B)
+44.84	+55.49	+31.05	+86.02

Owned By: A great birth to yearling EPD spread. His sire, Complement, excels in the Angus Sire Alliance for feed efficiency, maternal index and total profit. Negative for BVD-PI.

**Meadowmere Angus,
Westmoreland, Kan.**

Chisholm Trail Angus Association



AA R Ten X 7008 S A, sire of Lot 61. This Accelerated Genetics bull has a 0.3 BW, +68 WW EPD, +22 Milk EPD and a +129 YW EPD.

61 Hunts Ten X 5034

Calved: 1/26/15 Tattoo: 5034 18120831

#Mytty In Focus
#AA R Ten X 7008 S A
AA R Lady Kelton 5551

S A F Focus of E R
Mytty Countess 906
S A V Adaptor 2213
H S A F Lady Kelton 504B

Hunts 004 traveler 0597
Hunts Blackbird 5034
Hunts Blackbird 5034

S A V 8180 Traveler 004
Hunt Blackbird Babe 5097
Harms Freightliner 3191 Cri
Hunts 5140 Lady Blkbd 0834

BW	WW	Milk	YW	Act.BW	Adj.WW	Adj. YW
I+1.4	I+55	I+23	+103	78	721	1423
Weaning (\$W)		Feedlot (\$F)		Calving Ease		Beef (\$B)
+45.32		+65.60		+6		+143.32

Owned By:
Kevin Hunt, Wellington, Kan.

5034 is a really attractive, high-performing, calving ease bull. He ranks in the top 15% of the breed for marbling and feedlot efficiency, top 20% for YW EPD, top 10% for \$QG and \$Beef. His performance is no fluke. His maternal brother also had a YW of 1,400 lbs. Dam has weaned 2 calves with WW ratio of 107 and YW ratio of 108. Sold lot 61's brother to Brian Montenegro, Wellington. Kan.

62 Meadowmeres Complement B55

Calved: 1/27/15 Tattoo: B55 18262152

#Basin Franchise P142
EF Complement 8088
+EF Everelda Entense 6117

#C A Future Direction 5321
Basin Chloe 812L
BR Midland
+H F Everelda Entense 869

#+S A F Strategy 9015
Meadowmeres Hytop R105 61Y
Meadowmeres Hytop Eld R105

#S A F Focus of E R
+S A F Royal Queen 5084
Brooks Ext 792
Meadowmeres Hytop G76 I58

BW	WW	Milk	YW	Act.BW	Adj.WW	Adj.YW
I-0.1	I+55	I+24	I+99	76	650	1376
Weaning (\$W)		Feedlot (\$F)		Calving Ease		Beef (\$B)
+56.65		+58.16		+12		+108

Owned By:
Meadowmere Angus, Westmoreland, Kan.

Another good Complement son with an outstanding birth to yearling weight spread. His mother has a beautiful udder and has 3 calves averaging 71 lb. birth weight and a 650 lb. weaning weight. Negative for BVD-PI.

63 SF Final Answer 728

Calved: 2/01/16 Tattoo: 728 18346931

#S A V Final Answer 0035
Buford Final Answer W9552
BUF Lucy 7365

#Sitz Traveler 8180
S A V Emulous 8145
Basin Yellowstone P090
J Bar 7 Maddi Jo 4167

SF New Standard 72
Myra of SF 130
Myra of S F 191

#LCC New Standard
#Angela Of S F 180 Apple
Romans Empire 403
Myra 334 of Littlerobe

BW	WW	Milk	YW	Act.BW	Adj.WW	Adj.YW
I+0.9	I+51	I+22	I+91	72	676	
Weaning (\$W)		Feedlot (\$F)		Calving Ease		Beef (\$B)
+44.77		+46.36		+6		

Owned By:
Steffen Farms, Conway Springs, Kan.

A really smooth made yearling bull. Thick down his top but really clean up front. A very efficient-looking calf. Highly recommended for heifers or cows. Fertility tested. No creep.

64 RA146 Image Maker

Calved: 2/02/15 Brand: R146 18285929

Hero 6267 of R R 2418
H A Image Maker 0415
H A Rito Blackcap 9038

#R R Hero 6267
R R Everelda Entense 0413
H 96 Rito 2100 7371
H 96 Blackcap 3835

Max Monarch
Mignonne of SF 803
Miss Max Dividend R15

Legacy Monarch
Miss Maximum B R04
Maximum George K19
Miss B640 of B99 B547

BW	WW	Milk	YW	Act.BW	Adj.WW	Adj. YW
I+2.3	I+47	I+28	I+79	90	663	1081
Weaning (\$W)		Feedlot (\$F)		Calving Ease		Beef (\$B)
+46.07		+27.77		+3		

Owned By:
George and Jason Russell, Mulvane, Kan.

AI son of ABS Sire Image Maker. This bull has potential to be an excellent herd bull. Could be used on heifers with supervision.

65 TM Final Answer 5336

Calved: 2/06/15 Tattoo: 5336 18342460

#S A V Final Answer 0035
TM Final Answer 3319
TM Mrs Princess 6034

#Sitz Traveler 8180
S A V Emulous 8145
T&MNEW Design 0364047
#T&M MRS Alberda T3047

Mytty In Focus
TM MRS Vickie 9009
T&M MRS Vickie 7087

#S A F Focus of E R
Mytty Countess 906
T&M Future Direction 5068
T&M MRS EXT3056

BW	WW	Milk	YW	Act.BW	Adj.WW	Adj.YW
I+1.5	I+48	I+25	I+85			1126
Weaning (\$W)		Feedlot (\$F)		Calving Ease		Beef (\$B)
+44.66		+37.67		+5		

Owned By:
T&M Angus Ranch, LLC, Argonia, Kan.

Another moderate birth weight Final Answer grandson with a very strong maternal side. Strong EPDs. Adj YW 1126. Ratio of 106. Semen tested. No creep.

Chisholm Trail Angus Association

66 Meadowmeres Complement B125

Calved: 2/08/15 Tattoo: B125 18262148

#Basin Franchise P142 EF Complement 8088 +EF Everelda Entense 6117
#C A Future Direction 5321 Basin Chloe 812L BR Midland +H F Everelda Entense 869

S A F Focus of E R Meadowmeres Hytop X30 A142 Meadowmeres Hytop X30
S A F Fame G D A R Forever Lady 246 #+S A F Connection Meadowmeres Hytop Eld R105

BW	WW	Milk	YW	Act.BW	Adj.WW	Adj.YW
I-0.7	I+57	I+26	I+104	76	688	

Weaning (\$W)	Feedlot (\$F)	Calving Ease	Beef (\$B)
+59.62	+66.03	+12	

Owned By: **Meadowmere Angus, Westmoreland, Kan.**
A real curve bender. For comparable-aged bulls in the Angus database he is in the top 15% for calving ease and the top 20% for weaning weight and 15% for yearling weight EPDs and the top 15% for docility. Negative for BVD-PI.

67 Meadowmeres Complement B135

Calved: 2/15/15 Tattoo: B135 18262147

#Basin Franchise P142 EF Complement 8088 +EF Everelda Entense 6117
#C A Future Direction 5321 Basin Chloe 812L BR Midland +H F Everelda Entense 869

S A F Connection #Meadowmeres Hytop X30 Meadowmeres Hytop Eld R105
#+SVF Gdar 216 LTD +SAF Royal Queen 5084 #Brooks Ext 792 Meadowmeres Hytop G76 I58

BW	WW	Milk	YW	Act.BW	Adj.WW	Adj.YW
I-0.2	I+57	I+28	I+103	86	714	

Weaning (\$W)	Feedlot (\$F)	Calving Ease	Beef (\$B)
+61.44	+64.16	+10	+111.87

Owned By: **Meadowmere Angus, Westmoreland, Kan.**
Another curve-bending son of Complement. B135 is in the top 10% of comparable-aged Angus bulls for the dollars weaned index calculated by the American Angus Association. Negative for BVD-PI.

68 TM Final Answer 5343

Calved: 2/09/15 Tattoo: 5343 18342464

#S A V Final Answer 0035 TM Final Answer 3340 T&M MRS Linda 7004
#Sitz Traveler 8180 S A V Emulous 8145 #Rito 616 of 4B20 6807 T&M MRS Futuredirection 5031

#+S A F Connection TM MRS Erica 0014 TM MRS Erica 8069
#+SVF Gdar 216 LTD S A F Royal Queen 5084 TM New Design 6031 T&M MRS Gardens Ext 3003

BW	WW	Milk	YW	Act.BW	Adj.WW	Adj.YW
I+0.9	I+55	I+22	I+92			1025

Weaning (\$W)	Feedlot (\$F)	Calving Ease	Beef (\$B)
+51.26	+45.36	+7	

Owned By: **T&M Angus Ranch, LLC, Argonia, Kan.**
This is a low birth weight grandson of Final Answer with a +55 WW EPD and +92 YW EPD. Adj. YW 1205. Ratio 113. No creep. Semen tested.

69 TM Final Answer 5346

Calved: 2/09/15 Tattoo: 5346 18342465

#S A V Final Answer 0035 TM Final Answer 3319 TM Mrs Princess 6034
#Sitz Traveler 8180 S A V Emulous 8145 T&MNEW Design 0364047 #T&M MRS Alberda T3047

Woodhill Foresight TM MRS Erica 2338 T&M MRS Gardens Ext 3003
#Papa Forte 1921 Bon View Gammer 85 Gardens EXT 4137 S2 T&M MRS HI FLYER1020

BW	WW	Milk	YW	Act.BW	Adj.WW	Adj.YW
I+3.1	I+50	I+24	I+87			1146

Weaning (\$W)	Feedlot (\$F)	Calving Ease	Beef (\$B)
+40.19	+39.86	-1	

Owned By: **T&M Angus Ranch, LLC, Argonia, Kan.**
Another grandson of Final Answer with good EPDs for cows. Adj YW 1146. Ratio 108. Semen tested. No creep.

70 RA150 Safeguard

Calved: 2/10/15 Brand: 150 18285933

#+G A R New Design 5050 PA Safeguard 021 #+PA Loma Marshall 2905-730
#B/R New Design 036 G A R Precision 706 #+Woodhill Foresight Petes 2905 Dateline Marshall

CLR Midland 702 #Erica Midland RA73 Erica Monarch R26
#BR Midland +Finks Erica 3276 1426 N D Legacy Monarch Miss B490 of B403 B547

BW	WW	Milk	YW	Act.BW	Adj.WW	Adj.YW
I+2.1	I+48	I+26	I+89	80	664	926

Weaning (\$W)	Feedlot (\$F)	Calving Ease	Beef (\$B)
+41.28	+44.85	+1	

Owned By: **George and Jason Russell, Mulvane, Kan.**
Al'd son of ABS Sire Safeguard. Excellent set of numbers as the potential to be a heifer bull.



View from the catwalk at Winfield Livestock Auction.

Chisholm Trail Angus Association

71 SF Final Answer 439

Calved: 2/10/15 Tattoo: 539 18346930

#S A V Final Answer 0035
Buford Final Answer W9552
BUF Lucy 7365

#Sitz Traveler 8180
S A V Emulous 8145
Basin Yellowstone P090
J Bar 7 Maddi Jo 4167

SF New Standard 72
Mignonne of SF 013
Mignonne of SF 343

#LCC New Standard
#Angela Of S F 180
#+A&b Yukon 7150
#Molitor 473 Mignonne 6384

BW	WW	Milk	YW	Act.BW	Adj.WW	Adj.YW
I+0.8	I+41	I+18	83	74	566	
Weaning (\$W)		Feedlot (\$F)		Calving Ease		Beef (\$B)
+27.22		+38.94		+8		

Owned By: **Steffen Farms, Conway Springs, Kan.**

Another calving-ease yearling bull. Notice how smooth shouldered these yearling bulls are. Out of a nice, young cow that is really doing a good job for us. Highly recommended for heifers or cows. Fertility tested. No creep.

73 CLR Final Answer 515

Calved: 2/15/15 Brand: 515 18262698

#S A V Final Answer 0035
CLR Final Answer 202
CLR Lana

#Sitz Traveler 8180
S A V Emulous 8145
S S Objective T510 0T26
Molitor 2928 Lana 371-753

CLR Mandate 102
CLR Burgess 306
CLR Burgess 004

#SydGen Mandate 6079
CLR Lady Eden 802
S A V 8180 Traveler 004
Circle S Burgess 2017

BW	WW	Milk	YW	Act.BW	Adj.WW	Adj.YW
I-1.0	I+54	I+25	I+99	60		
Weaning (\$W)		Feedlot (\$F)		Calving Ease		Beef (\$B)
+51.87		+58.88		+12		

Owned By: **C Lewis Ranch, Derby, Kan.**

Actual birth weight was 60 pounds.

72 TM Final Answer 5353

Calved: 2/12/15 Tattoo: 5353 18342467

#S A V Final Answer 0035
TM Final Answer 3319
TM Mrs Princess 6034

#Sitz Traveler 8180
S A V Emulous 8145
T&MNEW Design 0364047
#T&M MRS Alberda T3047

TM Midland 8050
T&M MRS Queen 0109
T&M MRS Queen 7021

#BR Midland
#T&M MRS Alberda T1029
#Nichols Extra H6
T&M MRS Valors Val 526

BW	WW	Milk	YW	Act.BW	Adj.WW	Adj.YW
I+2.8	I+50	I+25	I+90			1911
Weaning (\$W)		Feedlot (\$F)		Calving Ease		Beef (\$B)
+40.69		+45.25		+1		

Owned By: **T&M Angus Ranch, LLC, Argonia, Kan.**

Another grandson of Final Answer. Good EPDs. Will work well on cows. Adj. YW 1191. Ratio 112. Semen tested, no creep.

74 SF Final Answer 540

Calved: 2/16/15 Brand: 540 18346928

#S A V Final Answer 0035
Buford Final Answer W9552
BUF Lucy 7365

#Sitz Traveler 8180
S A V Emulous 8145
Basin Yellowstone P090
J Bar 7 Maddi Jo 4167

+S&S 6807-1 Traveler E10
Susan of SF 814
Susan of SF 273

S&S Traveler 6807-1
S&S Enechomere 853
Romans Empire 403
Susan of S F 259

BW	WW	Milk	YW	Act.BW	Adj.WW	Adj.YW
I+0.4	I+43	I+21	I+74	70	638	
Weaning (\$W)		Feedlot (\$F)		Calving Ease		Beef (\$B)
+39.59		+21.77		+6		

Owned By: **Steffen Farms, Conway Springs, Kan.**

A really thick-topped, deep-sided yearling bull. Lots of muscle and yet a calving-ease specialist to boot! Out of a really good cow from the heart of our herd. Very highly recommended for heifers or cows. Fertility tested. No creep.

75 TM Final Answer 5367

Calved: 2/18/15 Tattoo: 5367 18342470

#S A V Final Answer 0035
TM Final Answer 3319
TM Mrs Princess 6034

#Sitz Traveler 8180
S A V Emulous 8145
T&MNEW Design 0364047
#T&M MRS Alberda T3047

Morgans Direction 111 9901
TM MRS Princess 9044
T&M MRS New DESIGN1041

#C A Future Direction 5321
MCC Barbie 9901 5205 797
#B/R New Design 036
T&M Miss Chey Flyer 97

BW	WW	Milk	YW	Act.BW	Adj.WW	Adj.YW
I+2.6	I+45	I+29	I+77			1173
Weaning (\$W)		Feedlot (\$F)		Calving Ease		Beef (\$B)
+43.39		+25.63		+2		

Owned By: **T&M Angus Ranch, LLC, Argonia, Kan.**

Another grandson of Final Answer. Good EPDs. Will work well on cows. Adj. YW 1191. Ratio 112. Semen tested, no creep.



Lena Hommertzhim, ABS rep, helps several Chisholm Trail Angus consignors with their genetic selections and artificial insemination programs. Here she is pictured with sale President Bill McIntire at the 2015 sale.

American Angus Association Selection Tools

Expected Progeny Difference (EPD) is the prediction of how future progeny of each animal are expected to perform relative to the progeny of other animals listed in the database. EPDs are expressed in units of measure for the trait, plus or minus. Interim EPDs may appear on young animals when their performance has yet to be incorporated into the American Angus Association National Cattle Evaluation (NCE) procedures. This EPD will be preceded by an "I" and may not or may not include the animal's own performance record for a particular trait, depending on its availability, appropriate contemporary grouping or data edits needed for NCE.

EPDs

Birth Weight EPD (Birth), expressed in pounds, is a predictor of a sire's ability to transmit birth weight to his progeny compared to that of other sires.

Weaning Weight EPD (Wean), expressed in pounds, is a predictor of a sire's ability to transmit weaning growth to his progeny compared to that of other sires.

Maternal Milk EPD (Milk) is a predictor of a sire's genetic merit for milk and mothering ability as expressed in his daughters compared to daughters of other sires. In other words, it is that part of a calf's weaning weight attributed to milk and mothering ability.

Yearling Weight EPD (Year), expressed in pounds, is a predictor of a sire's ability to transmit yearling growth to his progeny compared to that of other sires.

American Angus Association \$Value Indexes

\$Values are multi-trait selection indexes expressed in dollars per head, to assist commercial beef producers by adding simplicity to genetic selection decisions. A \$Value has meaning only when used in comparison to the \$Value of another animal. For example, just as with EPDs, variation in \$Values between animals indicates average expected differences in the relative value of progeny if random mating is assumed and the calves are exposed to the same environment.

\$Values			
\$W	\$F	\$G	\$B
+21.28	+13.60	+12.53	+25.32

Weaned Calf Value (\$W): an index expressed in dollars per head, is the expected average difference in future progeny performance for preweaning merit. \$W includes both revenue and cost adjustments associated with differences in birth weight, weaning direct growth, maternal milk, and mature cow size.

Feedlot Value (\$F): an index expressed in dollars per head, is the expected average difference in future progeny performance for postweaning performance compared to progeny of other sires.

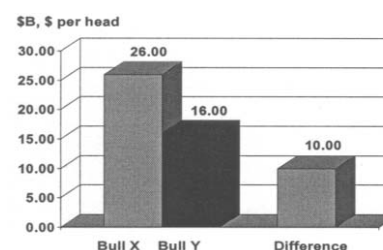
\$Values have meaning when used in comparing the relative merit or ranking of two individuals. For example, Bull X has a \$B value of +26.00, and Bull Y has a \$B value of +16.00. If these bulls were randomly mated to a comparable set of females and the calves were exposed to the same environment, on the average you would expect Bull X's progeny to have a +10.00 dollar per head advantage in postweaning performance and carcass merit over Bull Y's progeny (26.00 - 16.00 = +10.00 per head)

Grid Value (\$G): an index expressed in dollars per head, is the expected average difference in future progeny performance for carcass grid merit compared to progeny of other sires.

- **Quality Grade (\$QG)** represents the quality grade segment of the economic advantage found in \$G. \$QG is intended for the specialized user wanting to place more emphasis on improving quality grade. The carcass marbling (Marb) EPD, which is influenced by carcass marbling scores and ultrasound percent intramuscular fat (% IMF) measurements, contribute to \$QG.

- **Yield Grade (\$YG)** represents the yield grade segment of the economic advantage found in \$G. \$YG is intended for the specialized user wanting to place more emphasis on red meat yield. It provides a multi-trait approach to encompass ribeye, fat thickness and weight into an economic value for red meat yield.

Beef Value (\$B): an index expressed in dollars per head, is the expected average difference in future progeny performance for postweaning and carcass value compared to progeny of other sires. The \$B value combines the contributions of \$F and \$G.



Chisholm Trail Angus Association

76

RA 149 Bismark

Calved: 2/18/15 Brand: R149 18285932

#+S A V Bismarck 5682
Sedgwicks Bismark Y814
Sedgwicks Lucy 814

#+G A R Grid Maker
S A V Abigale 0451
#Dalebanks Extender 6012
Sedgwicks Lucy 811

MCC Daybreak
Mill Brae DB Balnorma 1078
Mill Brae IF Balnorma 9137

Boyd New Day 8005
MCC Miss Focus 134
#Mytty In Focus
Mill Brae 878 Balnorma 2169

BW	WW	Milk	YW	Act.BW	Adj.WW	Adj.YW
I+2.6	I+57	I+24	+102	90	741	1111

Weaning (\$W)	Feedlot (\$F)	Calving Ease	Beef (\$B)
+50.25	+63.15	+5	+116.03

Owned By:

**George and
Jason Russell,
Mulvane, Kan.**

Another good-looking bull from our herd sire, a Bismark grandson. This bull will be a great herd sire for any cattle herd.



S A V 707 Rito 9969, sire of Lot 78 as well as Lots 12, 13, 17, 21 and 22. This Schaff Angus Valley herd sire has a +6.2 BW, +62 WW, +17 Milk and a +123 YW.



Long-time consignors Steffen Farms (left) and Hunt Angus guys caught visiting pre-sale 2015.

77

SF Final Answer 542

Calved: 2/20/15 Tattoo: 542 18346929

#S A V Final Answer 0035
Buford Final Answer W9552
BUF Lucy 7365

#Sitz Traveler 8180
S A V Emulous 8145
Basin Yellowstone P090
J Bar 7 Maddi Jo 4167

SF New Standard 72
Myra of SF 07
Myra of S F 191

#LCC New Standard
#Angela Of S F 180
Romans Empire 403
Myra 334 of Littlerobe

BW	WW	Milk	YW	Act.BW	Adj.WW	Adj.YW
I+0.8	I+47	I+22	I+87	72	657	

Weaning (\$W)	Feedlot (\$F)	Calving Ease	Beef (\$B)
+40.07	+41.94	+8	

Owned By:

**Steffen Farms,
Conway Springs,
Kan.**

Phil Steffen started the registered Angus herd at Steffen Farms in 1965 so we are entering our 6th decade of selecting for calving ease, high growth and maternal traits. This young yearling bull is just another example of that selection process. Highly recommended for heifers or cows. Fertility tested, no creep.

78

Hunts 9969 Rito 5297

Calved: 2/21/15 Tattoo: 5297 18120879

+Rito 707 of Ideal 3407 7075
S A V 707 Rito 9969
BR Polly 8077-472

#R R Rito 707
Ideal 3407 of 1418 076
#Papa Equator 2928
+VDAR Polly 8077

Hunts 004 traveler 0597
Hunts Blackbird Babe 2097
Hunt Blackbird Babe 5097

#S A V 8180 Traveler 004
Hunt Blackbird Babe 5097
+Harms Freightliner 3191 Cri
Hunts Blackbird 1097

BW	WW	Milk	YW	Act.BW	Adj.WW	Adj.YW
I+3.7	I+50	I+18	I+96	87	677	1263

Weaning (\$W)	Feedlot (\$F)	Calving Ease	Beef (\$B)
+26.52	+56.20	-3	+105.70

Owned By:

**Nathan Hunt,
Wellington,
Kan.**

5297 is very thick bull. Very good on his feet and legs. He will be an easy-fleshing bull with a gentle disposition.

79

TM Final Answer 5370

Calved: 2/21/15 Tattoo: 5370 18342471

#S A V Final Answer 0035
TM Final Answer 3319
TM Mrs Princess 6034

#Sitz Traveler 8180
S A V Emulous 8145
T&MNEW Design 0364047
#T&M MRS Alberda T3047

S A F Connection
TM MRS Ruth 1321
TM MRS Ruth 9092

SVF Gdar 216 LTD
S A F Royal Queen 5084
T&M Midland 7040
#T&M MRS Alberda T3095

BW	WW	Milk	YW	Act.BW	Adj.WW	Adj.YW
I-0.2	I+48	I+26	I+82			1147

Weaning (\$W)	Feedlot (\$F)	Calving Ease	Beef (\$B)
+50.26	+32.36	+9	

Owned By:

**T&M Angus
Ranch, LLC,
Argonia, Kan.**

Another low birth weight grandson of Final Answer with a birth weight of 75 pounds and yearling weight EPD of +82, Milk EPD of +26. This calf will make good cows. Adj YW 1147. Ratio of 105. No creep, semen tested.

Chisholm Trail Angus Association

80 TM Final Answer 5375

Calved: 2/24/15 Tattoo: 5375 18342472

#S A V Final Answer 0035
TM Final Answer 3340
T&M MRS Linda 7004

#Sitz Traveler 8180
S A V Emulous 8145
#Rito 616 of 4B20 6807
T&M MRS Futuredirection 5031

TM Primestar 0060
TM MRS Jackie 2387
T&M MRS Jackie 7034

#Gardens Prime Star
T&M MRS Ext 7063
#Bon View New Design 1407
T&M MRS Advantange 0074

BW	WW	Milk	YW	Act.BW	Adj.WW	Adj.YW
I+2.8	I+52	I+24	+90			1073
Weaning (\$W)		Feedlot (\$F)		Calving Ease		Beef (\$B)
+43.22		+43.85		+1		

Owned By: Another grandson of Final Answer with good EPDs. Will do it all. Adj. YW 1073. Ratio 101. No creep. Semen tested.

T&M Angus Ranch, LLC, Argonia, Kan.



S A V International 2020, sire of Lot 83. This Schaff Angus Valley herd sire has a +4.9 BW EPD, +77 WW EPD, +136 YW EPD and a +23 Milk.

81 TM Foresight 5376

Calved: 2/25/15 Tattoo: 5376 18342473

#+Woodhill Foresight
TM Woodhill Foresight 3337
#T&M MRS Bonnie 7107

#Papa Forte 1921
Bon View Gammer 85
T&M New Design 1407 5036
T&M MRS Gardens EXT3035

Alberda Traveler 416
T&MMRSRUTH4044
T M Ruth N L 14

#D H D Traveler 6807
Alberda Queen Kimberly 222
Hoff Northlander S C 6029
MRS Vickie 886

BW	WW	Milk	YW	Act.BW	Adj.WW	Adj.YW
I+2.8	I+45	I+25	74		622	
Weaning (\$W)		Feedlot (\$F)		Calving Ease		Beef (\$B)
+40.47		+20.44		-1		

Owned By: A grandson of Woodhill Foresight. Has good EPDs. Good Adj. WW of 622. Adj. YW 1014. Ratio 96. Semen tested. No creep.

T&M Angus Ranch, LLC, Argonia, Kan.

83 Hunts International 5720

Calved: 3/05/15 Tattoo: 5720 18120967

S A V Harvester 0338
S A V International 2020
#+S A V Emblynette 5483

#S A V Heritage 6295
+S A V Emblynette 7749
#S A V 8180 Traveler 004
#S A V Emblynette 7260

#S A V 8180 Traveler 004
Hunts 004 Ida 0472
Hunts 8264 Ida 4620

#Sitz Traveler 8180
+Boyd Forever Lady 8003
Hunts 9440 Scotch Cap 8264
Hunts 0100 Ida 67206384

BW	WW	Milk	YW	Act.BW	Adj.WW	Adj.YW
I+4.3	I+62	I+23	I+110	88	744	1336
Weaning (\$W)		Feedlot (\$F)		Calving Ease		Beef (\$B)
+42		+73		-4		

Owned By: 5720 is an outstanding young herd sire prospect. He will add maternal and performance to your cow herd. 5720 is very thick from front to back and is good on his feet and legs with a great disposition. 5720 ranks in the top 10% of the breed for YW EPD and Feedlot Efficiency. He is sired by SVA International 2020 that sold for \$400,000 in the 2013 Schoff sale in ND. His dam has weaned four calves with a 104 ratio and three calves with 100.

Kaleb Hunt, Wellington, Kan.



Buying good Angus bulls is important for one generation and the next.

82 TM Final Answer 5387

Calved: 3/04/15 Tattoo: 5387 18342474

#S A V Final Answer 0035
TM Final Answer 3319
TM Mrs Princess 6034

#Sitz Traveler 8180
S A V Emulous 8145
T&MNEW Design 0364047
#T&M MRS Alberda T3047

TM Foresight 9036
TM MRS Princess 1386
TM MRS Princess 8044

#+Woodhill Foresight
T&M MRS Rancher 2083
#Nichols Extra H6
#T&M MRS Alberda T3047

BW	WW	Milk	YW	Act.BW	Adj.WW	Adj.YW
I+1.4	I+50	I+27	85			1064
Weaning (\$W)		Feedlot (\$F)		Calving Ease		Beef (\$B)
+50.36		+36.29		+5		

Owned By: Another moderate birth weight grandson of Final Answer. Has good EPDs. Adj. YW 1064. Ratio 102. Semen tested. No creep.

T&M Angus Ranch, LLC, Argonia, Kan.

Chisholm Trail Angus Association

Females

Marvin, Jason and Justin Jelinek
(316) 304-9243
(316) 215-2629
(316) 214-9134
20 commercial pairs

Kenny Baker
Thayer, Kan.
(620) 820-3202
6 Bred Cows with Fall Calves at side



Chisholm Trail is fortunate to have talented ladies working behind the scenes. Thank you to Susan Grelinger (left) and Sheila McIntire (right) who check buyers out following each annual sale.

Consigners Index

BRR Angus

Brenda Tautfest
Red Rock, Okla.
(580) 761-4034
rhondamccurry@hotmail.com
Lots: 8, 12-15, 17, 21-22, 25

C. Lewis Ranch

Clint Lewis
Derby, Kan.
(316) 648-7734
Lots: 10, 47-49, 52, 55-56, 58, 73

Clint Steffen

Conway Springs, Kan.
(316) 308-4673
Lot 32, 46

Duncan Angus

Marvin Duncan
Winfield, Kan.
(620) 442-9698
(620) 441-7633
Lots: 31, 33-35, 37-39, 44-45

7HAR Harrison Angus Ranch

Howard, Kan.
(316) 841-5925
Lots: 16, 18-20, 23-24, 26-29

Hunt Angus

Kevin, Nathan and Kaleb Hunt
Wellington, Kan.
(620) 845-0965
khunt0965@gmail.com
Lots: 61, 78, 83

Meadowmere Angus

Duane, Pam and Clay Davis
Westmoreland, Kan.
(785) 457-2863
Lots: 1, 2, 4, 9, 30, 60, 62, 66-67

Russell Angus

George and Jason Russell
Mulvane, Kan.
(316) 519-0767
j.k.russell@hotmail.com
Lots: 42, 57, 59, 64, 70, 76

Steffen Farms

Conway Springs, Kan.
(620) 456-2664
(620) 584-6688
nick@sktc.net
Lots: 36, 40-41, 50-51, 53-54, 63,
71, 74, 77

T&M Angus Ranch, LLC

Bill McIntire, Travis McIntire
Argonia, Kan.
(620) 435-6646
(620) 478-2105
mcintire@havalandtelco.com
Lots: 3, 5-7, 11, 65, 68-69, 72, 75, 79-82

Thank you for 65 years of the
opportunity to share our genetics and
market quality Angus bulls.

We hope to see you next year.

Chisholm Trail Angus Association
Bill McIntire
1399 NE 130th Avenue
Argonia, KS 67004

FIRST-CLASS
U.S. POSTAGE
PAID
PERMIT NO. 580
MANHATTAN, KS

Address Service Requested

DATED MATERIAL - DO NOT DELAY

Chisholm Trail Angus Sale
March 18, 2016

1 p.m., Winfield, Kansas

